

# ACTIVslate

## User Guide



PC version  
UK Edition  
TP-1472-UK  
Issue 5

### **All rights reserved**

All information contained in this document is subject to change without notice.

Any use of the contents of this User Manual other than for the purpose intended requires express written permission of Promethean Technologies Group Ltd.

All trademarks noted with the <sup>TM</sup> mark are the properties of their respective companies.

---

NOTE: All utility and driver software provided to operate ACTIV products is the property of Promethean. Use of this software is granted for the purpose of installation, set up and operation of ACTIV products and the standard feature set outlined in this guide. Promethean does not encourage or authorise any other use.

Additional application software is provided from time to time as a service to our customers. This software is licensed to the end user by the supplier. Use, possession and upgrades are the responsibility of that supplier. Registered owners of Promethean product should contact those suppliers directly for support.

---

**© Copyright Promethean Technologies Group Ltd 2005**

---

## Table of Contents

Safety Instructions .....	1
Environmental Considerations .....	1
General Information .....	2
Compliance .....	2
For More Information .....	2
Technical Support.....	2
User Group Forum.....	3
Updates .....	3
Operation of the ACTIVslate with ACTIVhub .....	4
Operation of the RF ACTIVslate .....	5
Power On/Off Button.....	5
Register Button.....	5
Mode Boxes.....	6
ACTIVpen Holder.....	6
Charging Socket.....	6
Recharging the battery.....	6
LCD Screen .....	7
Battery Icon .....	7
Signal Strength.....	7
ACTIVslate name.....	7
ACTIVslate ID.....	8
Menu Functions.....	8
ACTIVslate Controller Program .....	9
Launch the ACTIVslate Controller.....	9
From ACTIVstudio .....	9
From ACTIVprimary .....	9
Controller Window .....	9
ACTIVslate Type.....	9
Registering your ACTIVslate.....	10
Enabling/Disabling an ACTIVslate .....	11
Closing the Controller Window.....	12
Close Button.....	12
Exit Button.....	12



## Safety Instructions

The ACTIVslate is supplied with a universal voltage input Power Supply Unit (PSU) branded "ACTIVboard" type number FW7400/06. This is the only approved type of PSU for use with an ACTIVslate. Do not connect any other PSU to the ACTIVslate.

The PSU does not contain any user serviceable parts and must not be opened. If suspected to be faulty, contact an authorised Promethean service agent to obtain a replacement PSU of the same type. Inspect the PSU for physical damage to the casing and wiring before use. If damage is apparent, take care to avoid contact with any potentially live parts. Disconnect the PSU from the electrical mains supply at the wall socket and contact an authorised Promethean service agent for advice or replacement.

The PSU is supplied with a suitable mains input lead for your specific country. It may also be supplied with additional mains leads (in the case where the country has more than one type mains plug). Only use the lead which is compatible with your mains outlet socket. Do not attempt to modify the mains lead. If a compatibility issue exists, contact Promethean or one of its service agents before attempting to connect the unit to the mains supply.

The ACTIVslate does not contain any user serviceable parts. You should not attempt, under any circumstances, to gain access to the internal part of the unit. If damaged, quarantine the unit and contact an authorised Promethean service agent for advice or replacement.



**The ACTIVslate contains an internal Lithium-ion battery.**

**Do not incinerate. Return to Promethean for safe disposal.**

## Environmental Considerations

Operating/Charging Temperature Range: 5°C to 40°C

Storage Temperature Range: -10°C to 50°C

Humidity (non condensing): 0% to 90%

## General Information

The ACTIVslate allows you to control your computer from anywhere in the room by moving the ACTIVpen over the ACTIVslate surface and using the ACTIVpen to perform mouse clicks on the computer:

- Left click                      Press the ACTIVpen on the ACTIVslate surface.
- Right click                     Press the barrel button on the side of the ACTIVpen.
- Double click                  Press the ACTIVpen on the ACTIVslate surface twice in quick succession.

The ACTIVslate communicates with the ACTIVboard or ACTIVhub by radio signals. When you use the ACTIVpen on an ACTIVslate, the information is transmitted from the ACTIVslate via transceivers. The data is then sent, via cables, to the PC and converted into mouse data.

**Note: The correct driver software for your ACTIVboard or ACTIVhub must be installed and working correctly on your computer. Refer to the Quick Start Guide supplied with your product for more information.**

Up to 64 ACTIVslates can be registered with a single ACTIVboard or ACTIVhub, but only one ACTIVslate can be enabled at any one time. The controller program allows you to select the ACTIVslate you wish to use. The following pages describe how to use the ACTIVslate and the controller program.

## Compliance

The radio interface on this product (when fitted) is intended for use with Promethean ACTIVboard and ACTIVhub devices for operation in the following Countries:

Austria, Belgium, Cyprus, Czech Republic, Denmark, Estonia, Finland, France, Germany, Greece, Hungary, Iceland, Ireland, Italy, Latvia, Lithuania, Luxembourg, Malta, Netherlands, Norway, Poland, Portugal, Slovak Republic, Slovenia, Spain, Sweden, Switzerland, United Kingdom.

## For More Information

For more information about ACTIV products consult the full User Guides, which can be found on the Product CD. Consult the online help system for a full guide to using the entire feature set for your software.

## Technical Support

Telephone: 0870 165 2210 Monday - Friday 09.00 – 17.00

Email: [support@prometheanworld.com](mailto:support@prometheanworld.com)

Web: [http://www.prometheanworld.com/uk/html/customer\\_care/contact.shtml](http://www.prometheanworld.com/uk/html/customer_care/contact.shtml)

### **User Group Forum**

This is an online forum and we invite new ACTIVslate users to join and contribute to our growing online community of users.

[http://www.prometheanworld.com/common/html/vb\\_forum/index.php](http://www.prometheanworld.com/common/html/vb_forum/index.php)

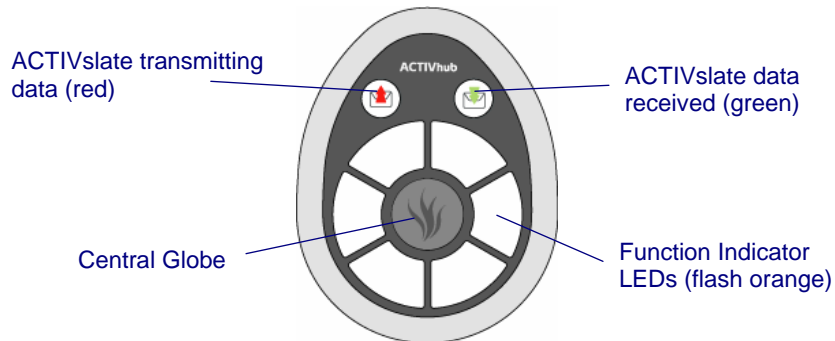
### **Updates**

Visit the Promethean website frequently to check for updated drivers, software, user guides and flipchart resources

<http://www.prometheanworld.com>

## Operation of the ACTIVslate with ACTIVhub

The ACTIVhub receives data from the ACTIVslate and communicates with your PC. The pattern of lights on the hub illuminate to indicate certain functions:



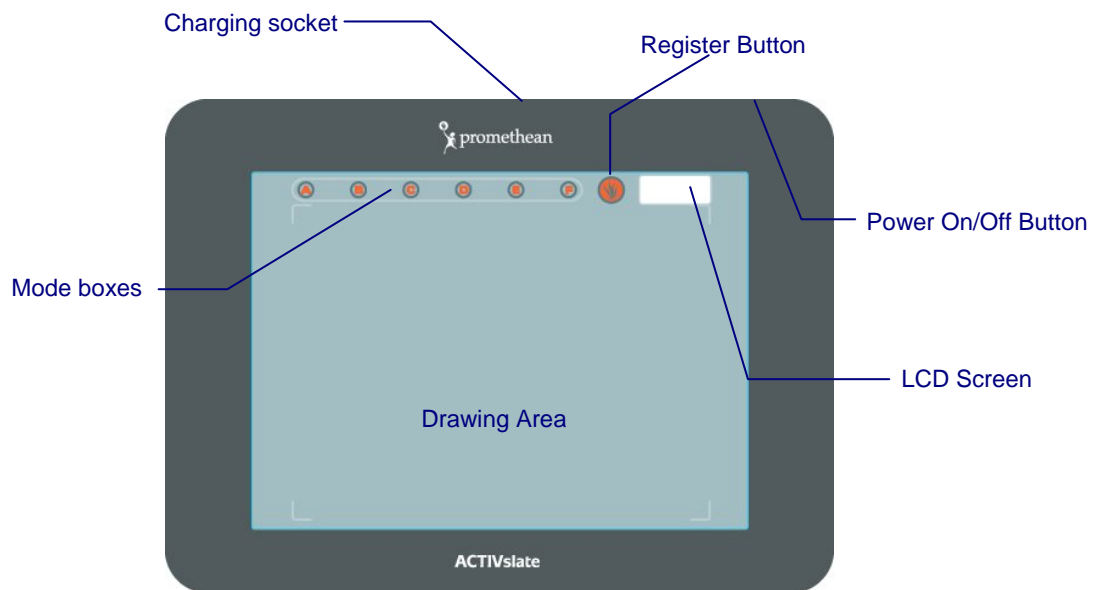
When you plug the ACTIVhub into the USB connector on your PC, the six Function Indicator LEDs will spin around the hub whilst communication with the driver is being established. When the driver has been detected, the orange LEDs stop spinning and the central globe LED illuminates white. This LED provides a constant white illumination to indicate normal operation and flashes during the registration process. The top right LED flashes green when ACTIVslate data is received. The top left LED flashes red to indicate that the ACTIVhub is transmitting data.

**Note: If the orange lights around the hub continue to spin, your computer might have defaulted to the wrong driver. Refer to the document [USB Getting Started Guide](#), which is included on your product CD. Ensure you follow the procedure relating to the version of Windows™ you are running on your PC.**

When you have connected the ACTIVhub, place it in an elevated position. The path between the ACTIVhub and ACTIVslate should be unobstructed and no more than 10 metres, for optimum performance.



## Operation of the RF ACTIVslate



### Power On/Off Button

To switch the ACTIVslate on, press and hold the Power On/Off Button. Release the button when you hear the ACTIVslate beep. After approximately 1 second, the Promethean logo will appear on the LCD.

To switch the ACTIVslate off, press and hold the same button until the termination message **ACTIVslate Shutting Down** appears on the LCD Screen.

**Note: To save battery power, the ACTIVslate will automatically switch off after three minutes of inactivity. To change this time, refer to 'Menu Functions'.**

### Register Button

The Register Button is used in the ACTIVslate registration process. Press the ACTIVpen in the middle of the Register Button to select it.

Refer to the Quick Start Guide supplied with your product for information about the Registration process.

## Mode Boxes

The six round mode boxes situated in a row above the drawing surface are used for two different functions:

1. To enter the pin number when registering the ACTIVslate with the software.
2. To activate one of the following tools in the software:

Mode Box	Tool
A	Black Pen
B	Red Pen
C	Blue Pen
D	Highlighter
E	Eraser
F	Marquee Select

The mode box chosen will update the software interface to reflect the active tool and colour (if applicable).

The mode boxes can only be selected by the ACTIVpen. Press the ACTIVpen in the middle of the mode box to select it.

## ACTIVpen Holder

The ACTIVslate is supplied with a holder attached for the ACTIVpen. This provides a convenient place to store your ACTIVpen when you are not using the ACTIVslate. Rest the ACTIVpen down horizontally for storage. Or, balance the ACTIVpen in an upright position so that it is ready for action.

The holder can be removed if it is not required or if it becomes damaged and needs replacing. Use an Allen key to unscrew the holder.

## Charging Socket

Insert the connector from the power supply into the Charging Socket to recharge the internal battery.

## Recharging the battery



**Insert the latching connector from the power supply cable into the ACTIVslate charging socket before plugging it into the mains supply and applying power.**

When sufficient time has elapsed (approx. 3 hours), a message will appear on the LCD Screen stating **Charge complete**. Remove the cable from the ACTIVslate charging socket.

Your ACTIVslate is now ready for use. You can now switch on the ACTIVslate and start using it.

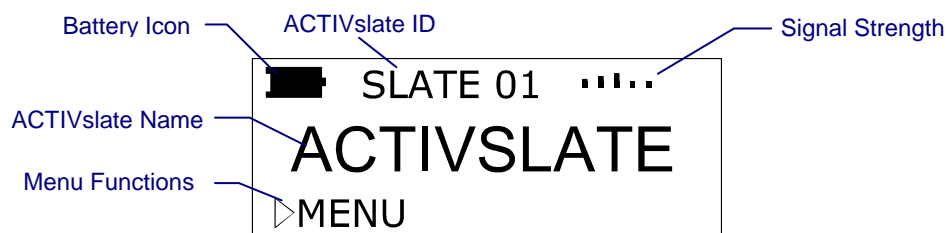
**Note: Recharge the ACTIVslate at least once every 6 months (regardless of use), otherwise the battery may become permanently 'unchargeable'.**

**Charging can only take place between a certain range of temperatures (5°C and 40°C). If the ACTIVslate has been kept in a cold environment, or left in direct sunlight and become very warm, the LCD will indicate 'TEMP HIGH' or 'TEMP LOW' in place of the ACTIVslate name. Always allow the ACTIVslate to return to room temperature before attempting to recharge the battery.**

**If you insert the latching connector into the charging socket and 'CHRG FAULT' appears on the LCD, the ACTIVslate is unserviceable. Contact Promethean Technical Support for advice.**

## LCD Screen

If the ACTIVslate is functioning correctly, the LCD Screen will look like this:



## Battery Icon

The battery icon indicates the amount of power left in the battery. When the battery is almost empty, a recharge message will appear on the LCD. This means you have approximately 30 minutes left before the ACTIVslate will shut down. To recharge the ACTIVslate, refer to 'Recharging the battery'.

The internal battery gives approx. 30 hours continuous use from when the battery is fully charged. As the ACTIVslate will not normally be used continuously, a full charge may well equate to a number of weeks of use.

## Signal Strength

The increasing signal bar size indicates the proximity of the ACTIVslate with the ACTIVboard or ACTIVhub. A small antenna icon is displayed next to the signal bars when a registered ACTIVslate is enabled. The icon disappears when the ACTIVslate is disabled.

## ACTIVslate name

Displays the default ACTIVslate name. This cannot be changed. Also displays the temperature warnings **TEMP HIGH** or **TEMP LOW**. Refer to 'Recharging the battery' for more information.

## ACTIVslate ID

The ID number is stored permanently in the ACTIVslate to distinguish one ACTIVslate from another.

The default ID number for every ACTIVslate will be set to 01. If you only ever have one ACTIVslate, there will be no reason to change this default.

Refer to 'Menu Functions' for more information about how to change the ID.

## Menu Functions

You can use the ACTIVpen on the LCD Screen to access some menu functions. The small triangle outline to the left of MENU becomes solid when the ACTIVpen is within close proximity of the LCD Screen or drawing area. When the triangle becomes solid, you can press the ACTIVpen on **MENU** to view or change the following functions:

- The contrast of the LCD      Press the ACTIVpen on **MENU**. Press the ACTIVpen on the forward arrow to darken the LCD or backwards arrow to lighten the LCD. The range is 00 to 17.
- ACTIVslate ID      To change the ID, press the ACTIVpen on **MENU**. Press **NEXT**. The Alter ID option is displayed on the LCD with a flashing ID number. Press the ACTIVpen on the forward arrow to increase the ID number. Press the ACTIVpen on the backwards arrow to decrease the ID number. The range is 01 to 64.
- Auto Off time for the LCD      Press the ACTIVpen on **MENU**. Press **NEXT** twice. Press the ACTIVpen on the forward arrow to increase the time or backwards arrow to decrease the time. The range is 1 to 10 minutes.
- Or, view the diagnostics information.      Press the ACTIVpen on **MENU**. Press **NEXT** three times. The information displayed is:
  - Power (voltage) in the battery
  - Channel number
  - EU (European) or USA version
  - Firmware version.

When charging the battery, the diagnostics will also display the temperature of the battery.

When viewing the menu functions, you will notice another triangle and EXIT appear in the bottom right hand corner of the LCD screen.

When you have finished amending the menu functions, press the ACTIVpen on **EXIT** to return to normal operation.

## ACTIVslate Controller Program

The ACTIVslate Controller allows you to:

- Show the total number of registered ACTIVslates.
- Register your ACTIVslates
- Enable and disable your ACTIVslates.
- Select a channel and ACTIVsystem ID.

### Launch the ACTIVslate Controller

#### From ACTIVstudio

- Click on **Start > Programs > ACTIV Software > ACTIVstudio 2 > ACTIVslate Controller.**

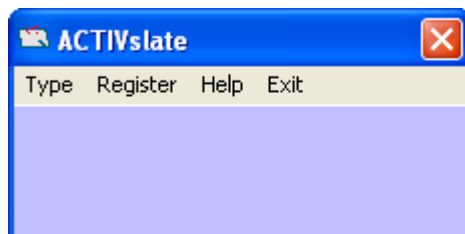
Or

- Open ACTIVstudio> Open the toolbox menu > select **Toolbox Customise...** > Add the ACTIVslate tool to your toolbox > click **OK**. Start the ACTIVslate Controller program by clicking on the ACTIVslate Tool icon, which is located in your ACTIVstudio toolbox or in your Windows™ system tray.

#### From ACTIVprimary

Click on **Teacher Tools Menu > Menu > ACTIVslate.**

### Controller Window



When run for the first time, the ACTIVslate Controller program will appear as a small window without any ACTIVslates displayed.

The Controller will only display the ACTIVslate icons when they have been registered. Refer to the 'Registering your ACTIVslate' section for information about how to register your ACTIVslates.

To reposition the window to another part of the screen, click on the title bar and drag the window to a new position, then release.

When your ACTIVslates are registered, the ACTIVslate ID is used to identify each ACTIVslate.

### ACTIVslate Type

The Controller supports the use of IR and RF versions. Therefore, you must ensure the correct type is selected to correspond with the type of ACTIVslate you are using. Click on **Type** and select **RF** from the drop down menu.

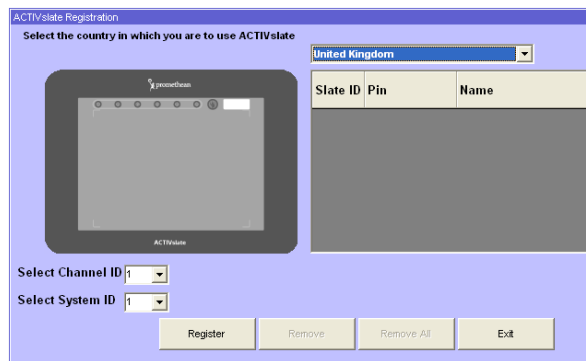
## Registering your ACTIVslate

You only need to register the ACTIVslate in the following circumstances:

- Before you use the ACTIVslate for the first time
- If you change channels

Your ACTIVslate works by sending radio signals to and receiving them from your ACTIVboard or ACTIVhub. Therefore, it is essential that you must register the ACTIVslate with the ACTIVboard or ACTIVhub in the room where it will be used. Prior to registering your ACTIVslate, the ACTIVhub must be switched on and attached to the computer.

1. Click on **Register** to open the Registration program.



**Note:** You cannot register the ACTIVslate until the hardware and software combination is approved for use in your country. To do this, click on the drop down arrow and select the country in which you are using the ACTIVslate. If permitted, you can then continue with registering your ACTIVslate. If your hardware and software combination is not permitted, a warning will be displayed and you will be blocked from using the ACTIVslate. In this case, or if your country does not appear in the list, contact Technical Support for advice.

2. Select a Channel number, see note below, and ACTIVsystem ID for the ACTIVslate you are registering from the drop down boxes.

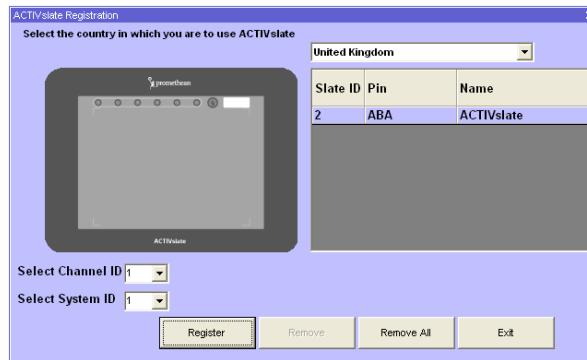
**Notes:**Two ACTIVboards or ACTIVhubs are capable of sharing a single channel, thereby allowing up to four systems to operate in relatively close proximity.

However, to avoid interference between each system, select different channels for two systems working in close proximity, such as in neighbouring rooms.

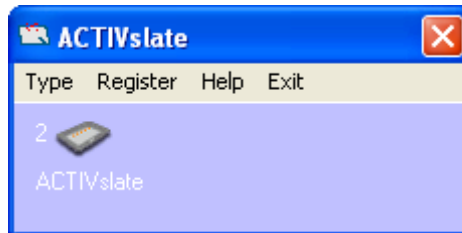
Systems that are more than 30 metres apart will not interfere with each other, therefore allowing channels to be reused.

3. To register an ACTIVslate, click on the **Register** Button in the Registration Program, and use the ACTIVpen to select the **Register Button** on the ACTIVslate.
4. The program will display a PIN number, which you must enter by pressing the ACTIVpen on the appropriate Mode Boxes on the ACTIVslate.

The registered ACTIVslate will be displayed in the Registered devices window.



5. Select **Exit** to close the Registration program and to display the Controller window once more. The Controller window will now show the registered ACTIVslate.



### Enabling/Disabling an ACTIVslate

To enable an ACTIVslate, click on the required icon. The icon will display transmission lines to show that it is enabled, see figure below. Once enabled, the ACTIVslate will control the computer cursor.


To disable an ACTIVslate, click on the highlighted ACTIVslate icon a second time, removing the highlight.



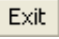
**Note: You may enable and disable any ACTIVslate at any time but only one ACTIVslate can be enabled at any one time.**

## Closing the Controller Window

### Close Button

Click on the  button to minimise the Controller window. The ACTIVslate icon will continue to be displayed in the Windows System Tray. Click on this icon to display the Controller window. If an ACTIVslate is enabled, you can use it to control the computer.

### Exit Button

Click on  to close the Controller program. The ACTIVslate icon is removed from the Windows System Tray. If an ACTIVslate is enabled, you can use it to control the computer.

To disable an ACTIVslate, open the ACTIVslate Controller window according to which software you are using and click on the enabled ACTIVslate icon to disable it.







Promethean Technologies Group Limited  
TDS House, Lower Philips Road  
Blackburn, Lancashire, BB1 5TH, UK

Tel: +44 (0) 1254 298598  
Fax: +44 (0) 1254 581574  
[www.prometheanworld.com](http://www.prometheanworld.com)