

# ActivPanel Height-Adjustable Stands

INTERACTIVE FLAT PANEL STAND OPTIONS

## PRODUCT SPECIFICATIONS

The ActivPanel Height-Adjustable Stands are a perfect solution to move the ActivPanel up and down effortlessly. Designed with a shielded spring-based system and no power requirements, the Height-Adjustable Stands are maintenance free and an ideal fit for the classroom.

### Height-Adjustable Wall Mount Specifications

Compatible with ActivPanel 65", 70", 75", 86" and ActivPanel i-Series 65", 75"



#### PHYSICAL SPECIFICATIONS

	Wall Mount for 65", 70", 75" Sizes	Wall Mount for 86" Size
Product Dimensions	559 x 609 x 69 mm (22 x 24 x 3 in)	925 x 1087 x 170 mm (36 x 43 x 7 in)
Packed Dimensions	630 x 740 x 95 mm (25 x 29 x 4 in)	960 x 1095 x 190 mm ( 38 x 43 x 8 in)
Net Weight	21.6 kg (48 lbs)	71 kg (157 lbs)
Packed Weight	24 kg (53 lbs)	75 kg (165 lbs)
Travel Distance (Adjustable Height)	400 mm (15.75 in)	650 mm (25.5 in)

#### PACKED CONTENTS

What's in the Box	Box 1 of 1: ActivPanel height-adjustable wall mount, mounting bar, wall frame cover, screw kit, side covers, installation guide. (Vesa mount required is included with ActivPanel. It is not included with ActivPanel i-Series and needs to be purchased separately.)	Box 1 of 1: ActivPanel height-adjustable wall mount, mounting bar, wall frame cover, screw kit, installation guide. (Vesa mount to be purchased separately).
-------------------	---	--

#### ADDITIONAL REQUIREMENTS

Users of the ActivPanel i-Series 65" and 75" need to purchase Vesa mount (AP-WALLMNT).	Users of the ActivPanel 86" need to purchase an additional Vesa mount (APTVMBB650), specifically designed to operate with this stand.
--	---

# ActivPanel Height-Adjustable Stands

## PRODUCT SPECIFICATIONS

### Wall Mount Accessories

The floor support accessory is required for schools that have thin walls or drywalls to ensure proper support for the ActivPanel.\*

### Height-Adjustable Wall Mount Floor Support Specifications

Compatible with ActivPanel 65", 70", 75", 86" and ActivPanel i-Series 65", 75"



### PHYSICAL SPECIFICATIONS

	Floor Support for 65", 70", 75" Sizes	Floor Support for 86" Size
Product Dimensions	650 x 2007 x 46 mm (26 x 79 x 2 in)	739 x 2009 x 69 mm (29 x 79 x 3 in)
Packed Dimensions	145 x 1070 x 72 mm (6 x 42 x 3 in)	170 x 1080 x 70 mm (7 x 43 x 3 in)
Net Weight	11 kg (24 lbs)	13.7 kg (30 lbs)
Packed Weight	11.4 kg (25 lbs)	14.1 kg (31 lbs)

### PACKED CONTENTS

What's in the Box	Box 1 of 1: Frame assembly, screw kit, cover strips for floor support legs, installation guide	Box 1 of 1: Frame assembly, screw kit, cover strips for floor support legs, installation guide
-------------------	--	--

\*Consult your local building guidelines prior to installation.

ActivPanel 2018 Height-Adjustable Stands SS 01/18 v2.6 EN-INTL

Page 2

# ActivPanel Height-Adjustable Stands

## PRODUCT SPECIFICATIONS

### Height-Adjustable Mobile Stand Specifications

Compatible with ActivPanel 65", 70", 75" and ActivPanel i-Series 65", 75"



#### PHYSICAL SPECIFICATIONS

##### Height-Adjustable Mobile Stand for 65", 70", 75" Sizes

Product Dimensions	1196 x 1803 x 876 mm (47 x 71 x 34 in)
Packed Dimensions	Box 1 of 2 (Mobile Stand): 945 x 1735 x 180 mm (37 x 68 x 7 in) Box 2 of 2 (Height-Adjustable Mount): 630 x 740 x 95 mm (29 x 25 x 3.7 in)
Net Weight	Box 1 of 2 (Mobile Stand): 42.5 kg (94 lbs) Box 2 of 2 (Height-Adjustable Mount): 21.6 kg (47.6 lbs)
Packed Weight	Box 1 of 2 (Mobile Stand): 48.5 kg (107 lbs) Box 2 of 2 (Height-Adjustable Mount): 24 kg (52.9 lbs)
Travel Distance (Adjustable Height)	400 mm (15.75 in)

#### PACKED CONTENTS

What's in the Box	Box 1 of 2: Mobile stand base, mobile stand frame, castors, screw kit, installation guide Box 2 of 2: Height-adjustable mount (Vesa mount required is included with ActivPanel. It is not included with ActivPanel i-Series and needs to be purchased separately.)
-------------------	---

#### ADDITIONAL REQUIREMENTS

Users of the ActivPanel i-Series 65" and 75" need to purchase Vesa mount (AP-WALLMNT)

#### WARRANTY

Three-Year Warranty (upgrade options available and vary by region). For more information, visit [PrometheanWorld.com/ActivCare](http://PrometheanWorld.com/ActivCare).

#### INSTALLATION

The installation of this product should be completed by a qualified installer. Use of components not supplied by Promethean or not meeting minimum specifications may impact performance, safety and warranty. For more information, visit [Support.PrometheanWorld.com](http://Support.PrometheanWorld.com).

#### COMPLIANCE & CERTIFICATION

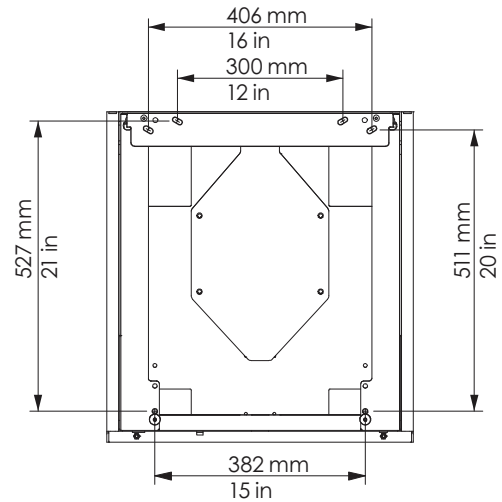
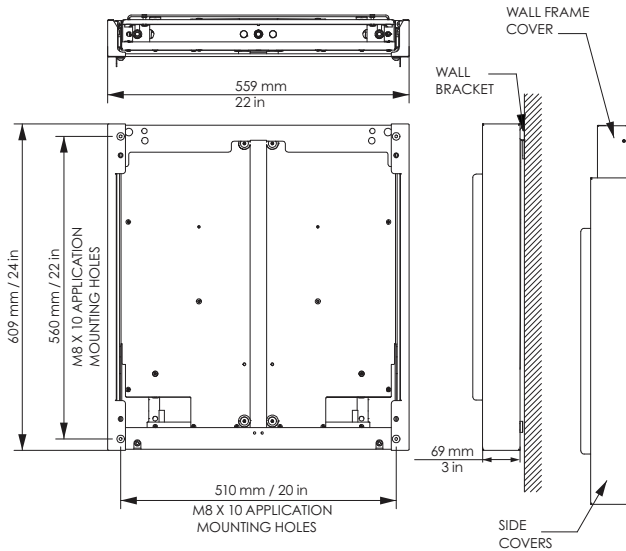
Regulatory Certification CE LVD, CB, UL, CUL

#### SUPPORT

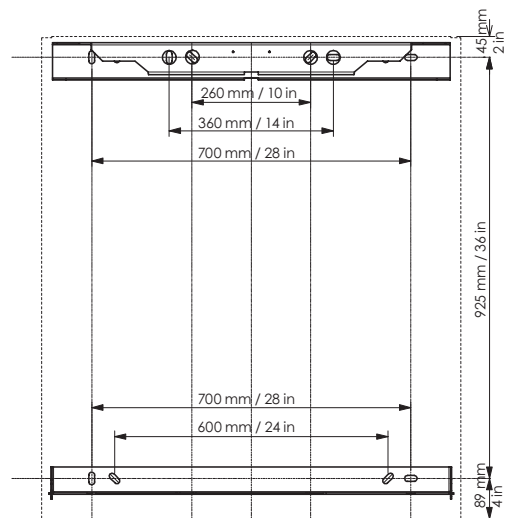
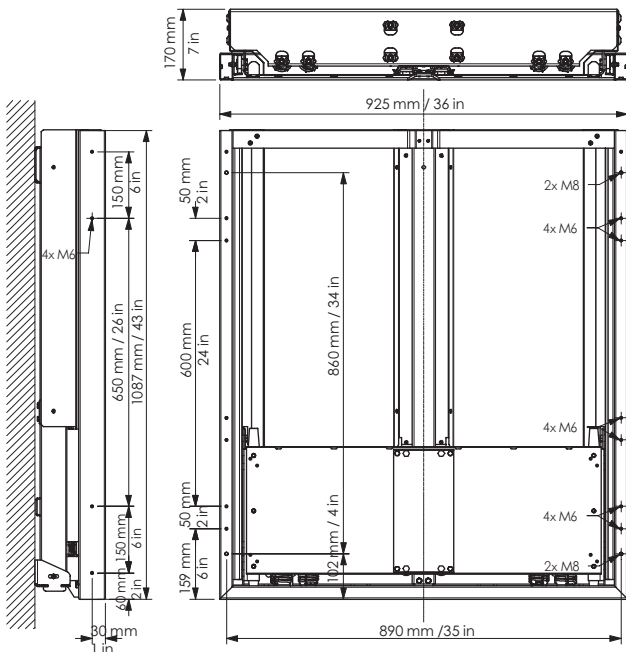
For all Promethean products, visit [Support.PrometheanWorld.com](http://Support.PrometheanWorld.com).

TECHNICAL DRAWINGS

Height-Adjustable Wall Mount for 65", 70", 75" Sizes



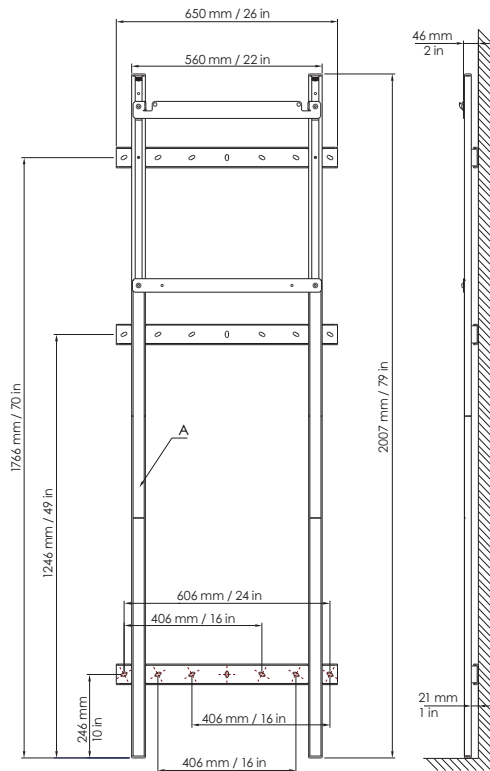
Height-Adjustable Wall Mount for 86" Size



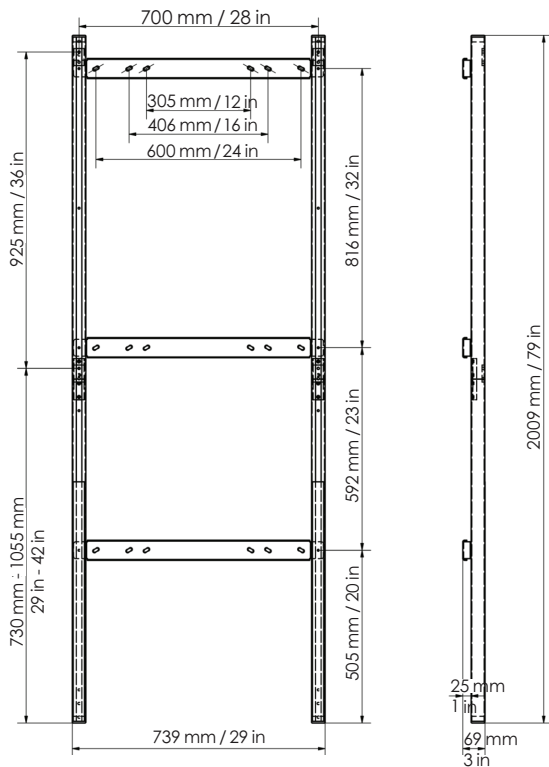
ActivPanel 2018 Height-Adjustable Stands SS 01/18 v2.6 EN-INTL

TECHNICAL DRAWINGS

Height-Adjustable Wall Mount Floor Support for 65", 70", 75" Sizes



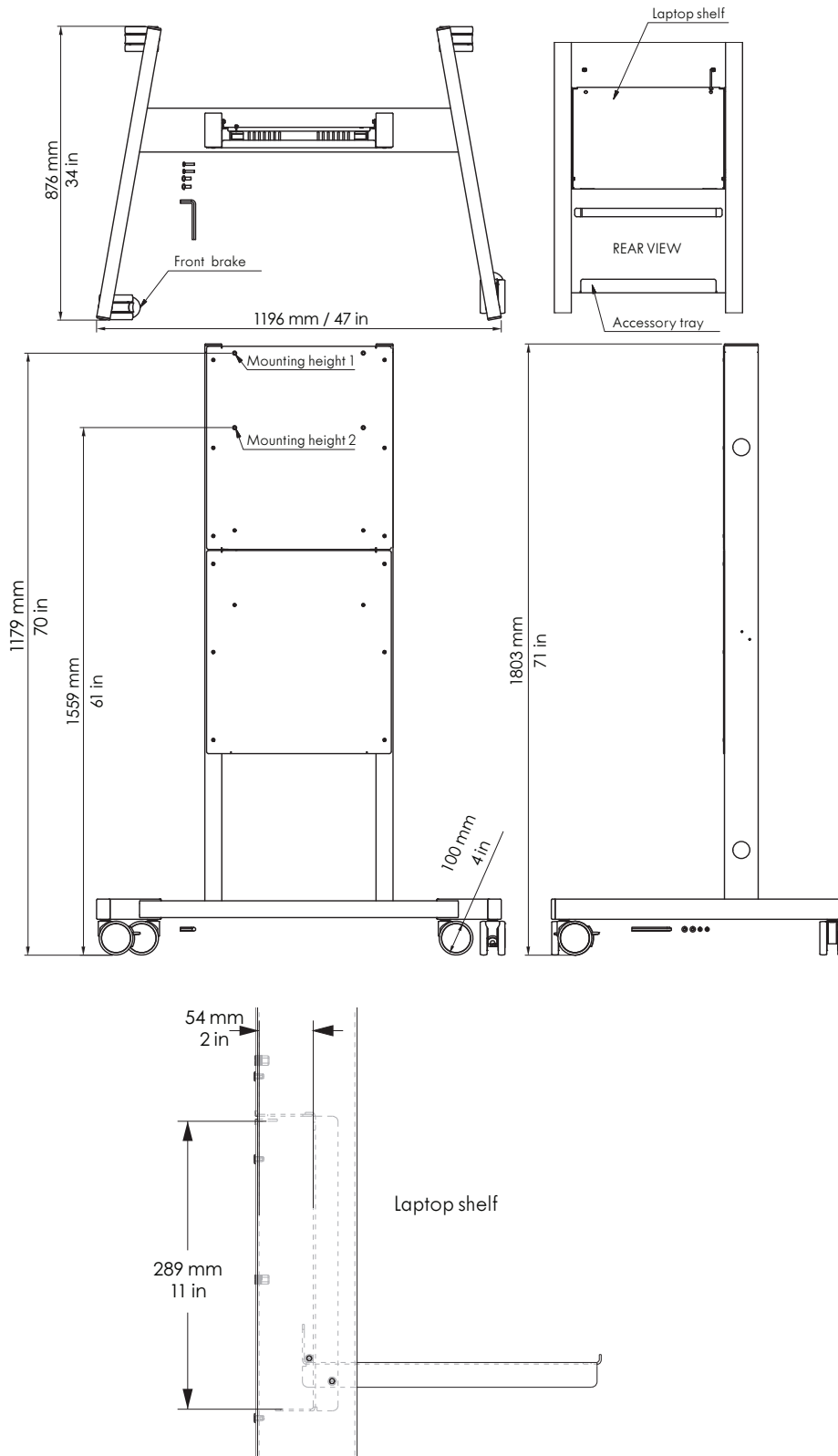
Height-Adjustable Wall Mount Floor Support for 86" Size



ActivPanel 2018 Height-Adjustable Stands SS 01/18 v2.6 EN-INTL

TECHNICAL DRAWINGS

Height-Adjustable Mobile Stand for 65", 70", 75" Sizes



ActivPanel 2018 Height-Adjustable Stands SS 01/18 v2.6 EN-INTL